



Energiø Bornholm – Bornholm I Nord (Projektion: ETRS89, UTM33N)					
PROJEKT	HAVVINDMØLLEPARK	POINTS	OBJECTID	Y	X
Energiø Bornholm	Bornholm I Nord	1	0	6089923,12	455171,50
Energiø Bornholm	Bornholm I Nord	2	1	6099545,61	455267,82
Energiø Bornholm	Bornholm I Nord	3	2	6108549,33	462364,43
Energiø Bornholm	Bornholm I Nord	4	3	6106688,12	464814,08
Energiø Bornholm	Bornholm I Nord	5	4	6106688,12	464814,08
Energiø Bornholm	Bornholm I Nord	6	5	6105985,30	464776,63
Energiø Bornholm	Bornholm I Nord	7	6	6105982,03	464776,56
Energiø Bornholm	Bornholm I Nord	8	7	6105001,97	464788,53
Energiø Bornholm	Bornholm I Nord	9	8	6105000,60	464788,57
Energiø Bornholm	Bornholm I Nord	10	9	6104998,71	464788,68
Energiø Bornholm	Bornholm I Nord	11	10	6104021,53	464864,74
Energiø Bornholm	Bornholm I Nord	12	11	6104018,28	464865,10
Energiø Bornholm	Bornholm I Nord	13	12	6103048,17	465004,91
Energiø Bornholm	Bornholm I Nord	14	13	6103047,08	465005,08
Energiø Bornholm	Bornholm I Nord	15	14	6103044,96	465005,48
Energiø Bornholm	Bornholm I Nord	16	15	6102086,07	465208,45
Energiø Bornholm	Bornholm I Nord	17	16	6102082,90	465209,23
Energiø Bornholm	Bornholm I Nord	18	17	6101139,35	465474,48
Energiø Bornholm	Bornholm I Nord	19	18	6101138,54	465474,72
Energiø Bornholm	Bornholm I Nord	20	19	6101136,24	465475,47
Energiø Bornholm	Bornholm I Nord	21	20	6100212,06	465801,88
Energiø Bornholm	Bornholm I Nord	22	21	6100209,02	465803,07
Energiø Bornholm	Bornholm I Nord	23	22	6099617,61	466056,58
Energiø Bornholm	Bornholm I Nord	24	23	6091350,00	459773,00
Energiø Bornholm	Bornholm I Nord	25	24	6089648,84	458481,21
Energiø Bornholm	Bornholm I Nord	26	25	6089923,12	455171,50

Energiø Bornholm – Bornholm II (Projektion: ETRS89, UTM33N)					
PROJEKT	HAVVINDMØLLEPARK	POINTS	OBJECTID	Y	X
Energiø Bornholm	Bornholm II	27	0	6061450,00	490487,00
Energiø Bornholm	Bornholm II	28	1	6058420,00	471025,00
Energiø Bornholm	Bornholm II	29	2	6060170,00	468094,00
Energiø Bornholm	Bornholm II	30	3	6066000,00	469981,00
Energiø Bornholm	Bornholm II	31	4	6066260,00	470209,00
Energiø Bornholm	Bornholm II	32	5	6070700,00	474267,00
Energiø Bornholm	Bornholm II	33	6	6076960,00	481015,00
Energiø Bornholm	Bornholm II	34	7	6080264,57	483458,28
Energiø Bornholm	Bornholm II	35	8	6082574,07	485906,79

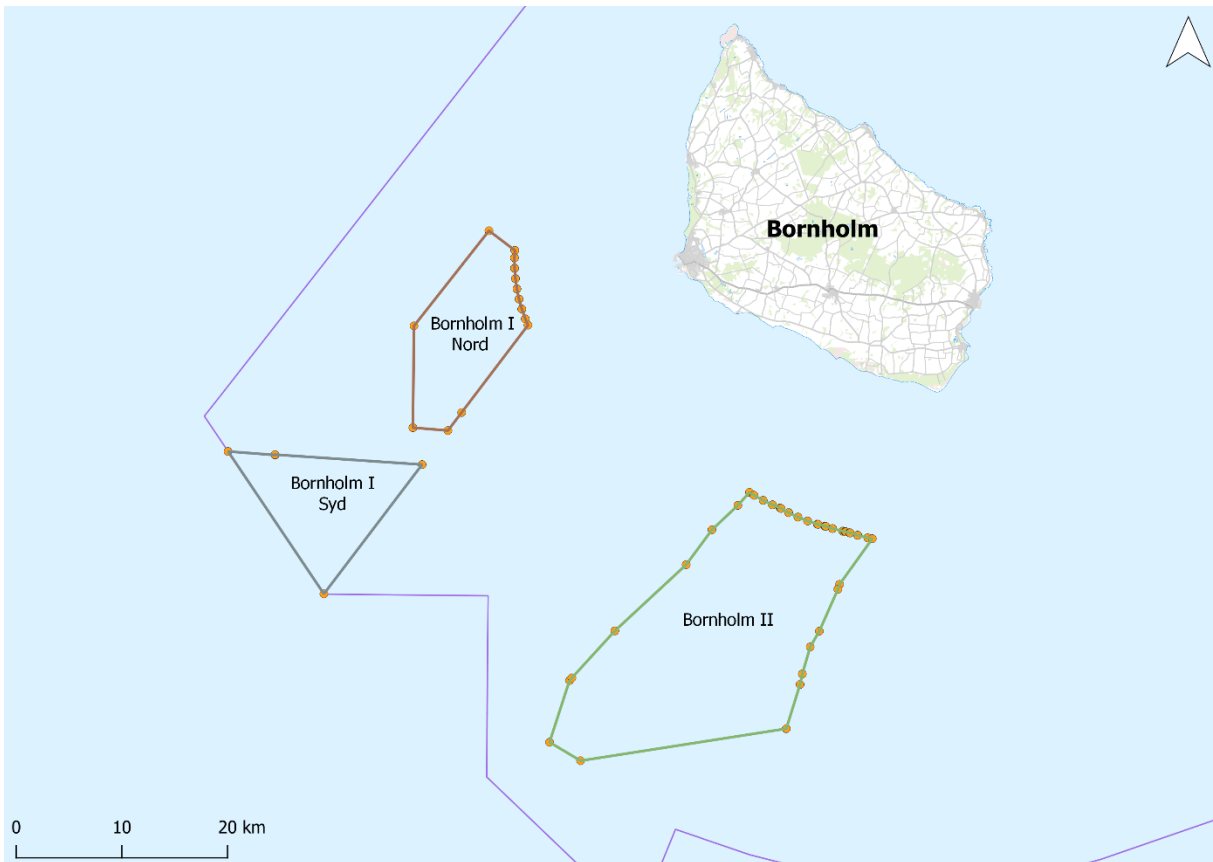


Energiø Bornholm	Bornholm II	36	9	6083810,25	487003,88
Energiø Bornholm	Bornholm II	37	10	6083527,97	487437,90
Energiø Bornholm	Bornholm II	38	11	6083526,64	487440,07
Energiø Bornholm	Bornholm II	39	12	6083526,28	487440,69
Energiø Bornholm	Bornholm II	40	13	6083046,90	488295,33
Energiø Bornholm	Bornholm II	41	14	6083045,39	488298,23
Energiø Bornholm	Bornholm II	42	15	6082622,94	489182,38
Energiø Bornholm	Bornholm II	43	16	6082622,00	489184,47
Energiø Bornholm	Bornholm II	44	17	6082621,75	489185,07
Energiø Bornholm	Bornholm II	45	18	6082326,73	489909,14
Energiø Bornholm	Bornholm II	46	19	6082326,26	489910,36
Energiø Bornholm	Bornholm II	47	20	6082321,76	489922,28
Energiø Bornholm	Bornholm II	48	21	6082276,65	489998,89
Energiø Bornholm	Bornholm II	49	22	6082276,07	489999,91
Energiø Bornholm	Bornholm II	50	23	6081886,68	490703,76
Energiø Bornholm	Bornholm II	51	24	6081885,32	490706,40
Energiø Bornholm	Bornholm II	52	25	6081462,88	491590,54
Energiø Bornholm	Bornholm II	53	26	6081461,94	491592,62
Energiø Bornholm	Bornholm II	54	27	6081461,57	491593,53
Energiø Bornholm	Bornholm II	55	28	6081097,87	492503,39
Energiø Bornholm	Bornholm II	56	29	6081096,76	492506,44
Energiø Bornholm	Bornholm II	57	30	6080798,36	493420,90
Energiø Bornholm	Bornholm II	58	31	6080797,88	493422,43
Energiø Bornholm	Bornholm II	59	32	6080782,59	493474,98
Energiø Bornholm	Bornholm II	60	33	6080777,52	493492,43
Energiø Bornholm	Bornholm II	61	34	6080777,27	493493,33
Energiø Bornholm	Bornholm II	62	35	6080606,35	494136,12
Energiø Bornholm	Bornholm II	63	36	6080606,08	494137,20
Energiø Bornholm	Bornholm II	64	37	6080596,75	494175,71
Energiø Bornholm	Bornholm II	65	38	6080584,00	494213,23
Energiø Bornholm	Bornholm II	66	39	6080583,64	494214,31
Energiø Bornholm	Bornholm II	67	40	6080379,02	494864,59
Energiø Bornholm	Bornholm II	68	41	6080378,58	494866,06
Energiø Bornholm	Bornholm II	69	42	6080378,26	494867,26
Energiø Bornholm	Bornholm II	70	43	6080136,44	495816,78
Energiø Bornholm	Bornholm II	71	44	6080136,00	495818,70
Energiø Bornholm	Bornholm II	72	45	6080094,51	496013,36
Energiø Bornholm	Bornholm II	73	46	6080082,03	496073,87
Energiø Bornholm	Bornholm II	74	47	6080066,95	496132,26
Energiø Bornholm	Bornholm II	75	48	6080066,81	496132,81
Energiø Bornholm	Bornholm II	76	49	6079985,79	496461,79



Energiø Bornholm	Bornholm II	77	50	6079985,66	496462,34
Energiø Bornholm	Bornholm II	78	51	6079977,68	496496,40
Energiø Bornholm	Bornholm II	79	52	6079966,28	496529,48
Energiø Bornholm	Bornholm II	80	53	6079965,89	496530,66
Energiø Bornholm	Bornholm II	81	54	6079741,44	497238,89
Energiø Bornholm	Bornholm II	82	55	6079740,98	497240,45
Energiø Bornholm	Bornholm II	83	56	6079740,66	497241,65
Energiø Bornholm	Bornholm II	84	57	6079498,85	498191,15
Energiø Bornholm	Bornholm II	85	58	6079498,15	498194,34
Energiø Bornholm	Bornholm II	86	59	6079417,86	498625,97
Energiø Bornholm	Bornholm II	87	60	6075105,90	495528,52
Energiø Bornholm	Bornholm II	88	61	6074630,92	495367,22
Energiø Bornholm	Bornholm II	89	62	6070670,96	493609,93
Energiø Bornholm	Bornholm II	90	63	6069182,21	492748,87
Energiø Bornholm	Bornholm II	91	64	6066630,45	492003,65
Energiø Bornholm	Bornholm II	92	65	6065638,47	491788,18
Energiø Bornholm	Bornholm II	93	66	6061450,00	490487,00

Energiø Bornholm – Bornholm I Syd (Projektion: ETRS89, UTM33N)					
PROJEKT	HAVVINDMØLLEPARK	POINTS	OBJECTID	Y	X
Energiø Bornholm	Bornholm I Syd	94	0	6087672,10	437686,14
Energiø Bornholm	Bornholm I Syd	95	1	6087334,70	442140,44
Energiø Bornholm	Bornholm I Syd	96	2	6087373,33	442127,12
Energiø Bornholm	Bornholm I Syd	97	3	6086432,20	456038,63
Energiø Bornholm	Bornholm I Syd	98	4	6074200,00	446750,00
Energiø Bornholm	Bornholm I Syd	99	5	6087672,10	437686,14



Figur 1 Miljøvurderingsområde for havvindmølleparkerne til Plan for Program EnergiØ Bornholm.